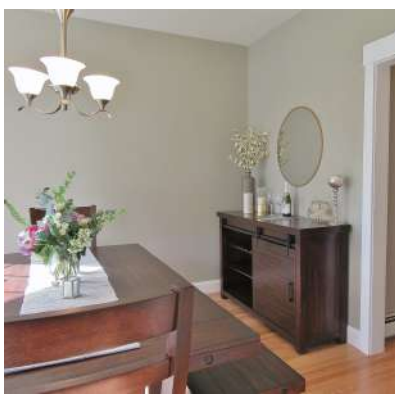
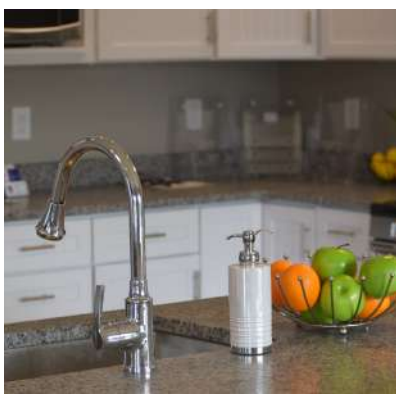


The Cumberland



 2,400

 4

 2.5

Key Features

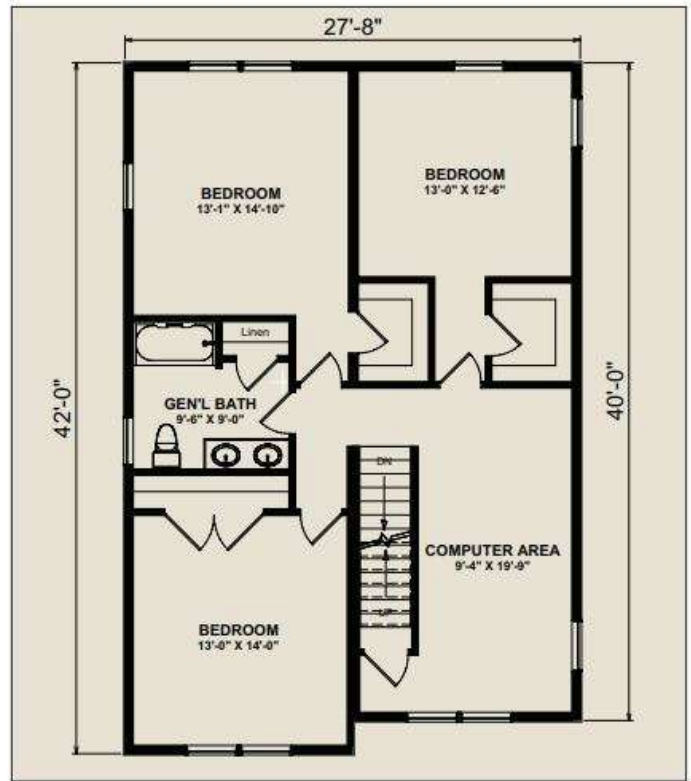
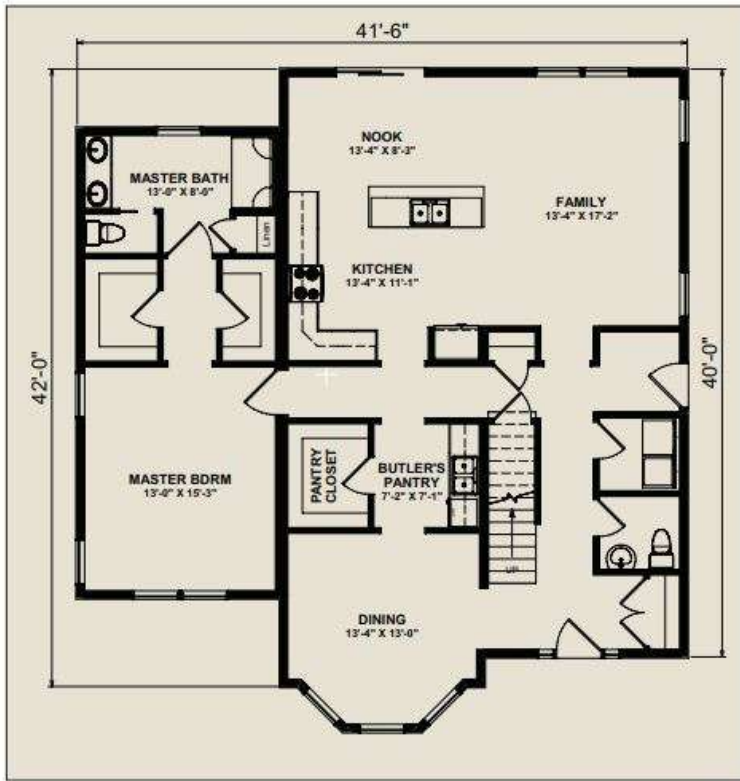
- Open concept family room, kitchen and breakfast nook
- Formal dining room with a large bay window
- Custom 42" beadboard cabinets that run to the ceiling with crown molding
- Farmhouse trim package
- Flex space for a home office

The Cumberland is such a great floor plan, we built it as our model home! The open concept family room, kitchen and breakfast nook are the center of this home. The first floor master suite has double walk-in closets and a large attached bath. The second floor features a flex area and three large bedrooms plus a bath. One of the main highlights is the third floor featuring a full walk up attic - major opportunity for future space. More: <https://cchfi.com/the-cumberland/>

Some features shown are considered upgrades. Prices subject to change due to market conditions. Until a contract is signed, we cannot guarantee a specific price.

For more info: 207-892-2700

The Cumberland



For more info: 207-892-2700



CHASE CUSTOM HOMES
& FINANCE, INC.

Serving Southern & Central Maine for Over 30 Years