

The Stillwater Colonial



 1,390

 3

 1.5

Key Features

- Front porch
- Open concept first floor
- Hardwood throughout the first floor
- Soft carpet throughout upstairs
- Plank-style tile in baths
- Full, unfinished basement
- Allowances for appliance package, kitchen design, bath & flooring

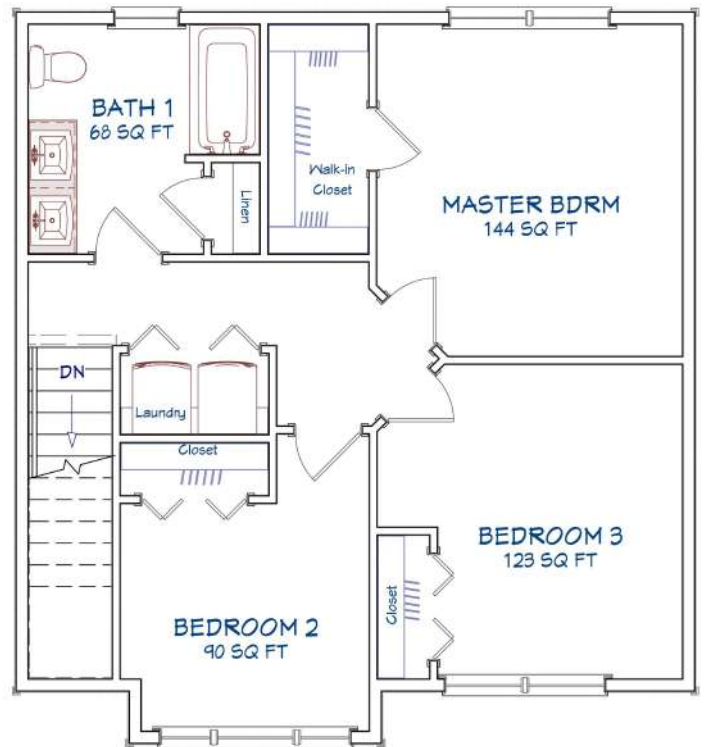
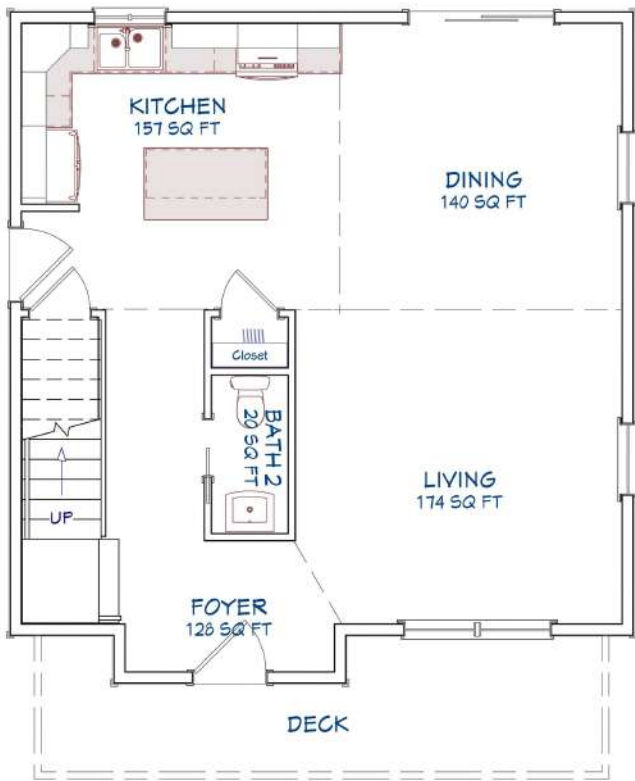
This floor plan is optimized for functional space and affordability - just like our Staley Colonial, but with a front porch. Enjoy a beautiful open-concept first floor with a bright kitchen, dining, living area and half bath off the first floor hallway. The second story features 3 bedrooms and a shared bath with a double vanity sink. The master bedroom has 145+/- square feet of space, plus a walk-in closet. *Price listed does not include garage.*

More: www.cchfi.com/the-stillwater

Some features shown are considered upgrades. Prices subject to change due to market conditions. Prices subject to change due to market conditions. Until a contract is signed, we cannot guarantee a specific price.

For more info: 207-892-2700

The Stillwater Colonial



For more info: 207-892-2700



CHASE CUSTOM HOMES
& FINANCE, INC.

Serving Southern & Central Maine for Over 30 Years